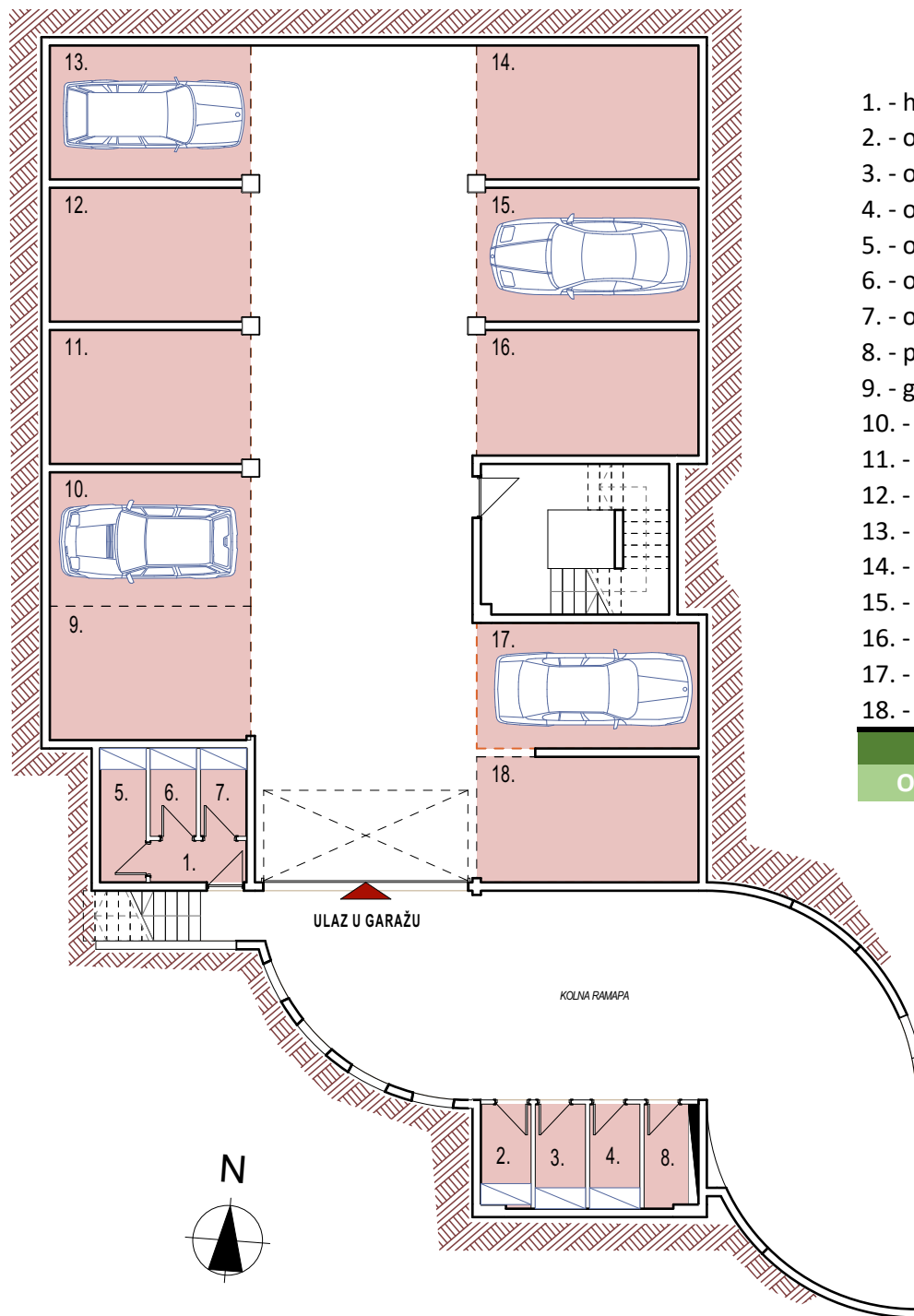
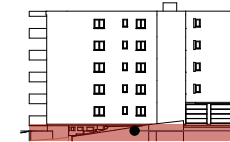
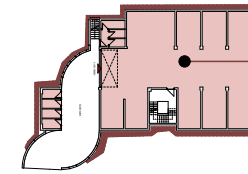


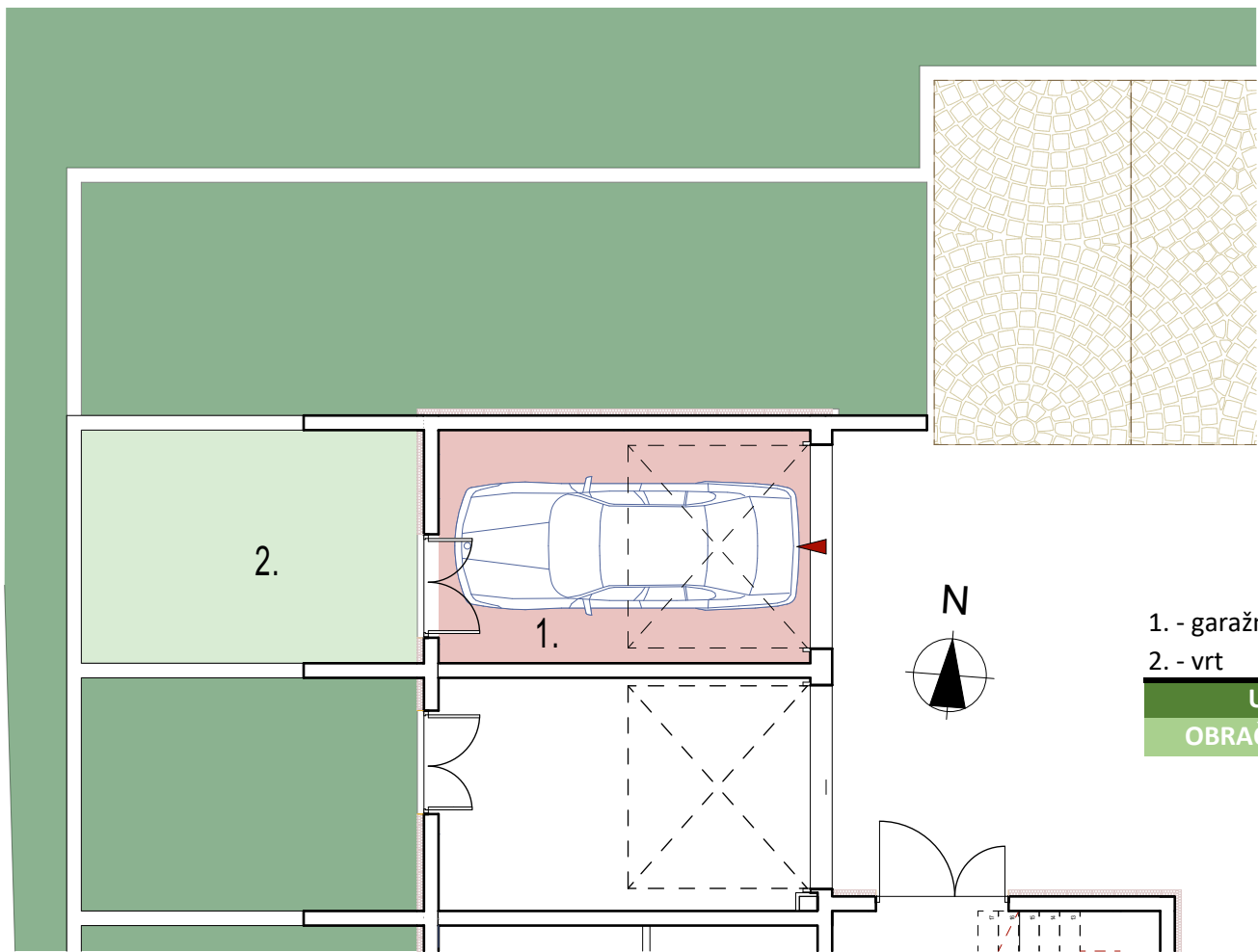
KATALOG STANOVA



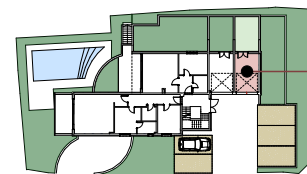
1. - hodnik	2,30
2. - ostava 1	2,94
3. - ostava 2	3,00
4. - ostava 3	3,00
5. - ostava 4	3,52
6. - ostava 5	2,31
7. - ostava 6	2,31
8. - pr. za el. energiju	3,19
9. - garažno mjesto 1	15,36
10. - garažno mjesto 2	15,36
11. - garažno mjesto 3	15,36
12. - garažno mjesto 4	15,36
13. - garažno mjesto 5	15,36
14. - garažno mjesto 6	16,96
15. - garažno mjesto 7	16,96
16. - garažno mjesto 8	15,90
17. - garažno mjesto 9	15,90
18. - garažno mjesto 10	15,90

UKUPNA POVRŠINA:	180,99
OBRAČUNSKA POVRŠINA:	180,99





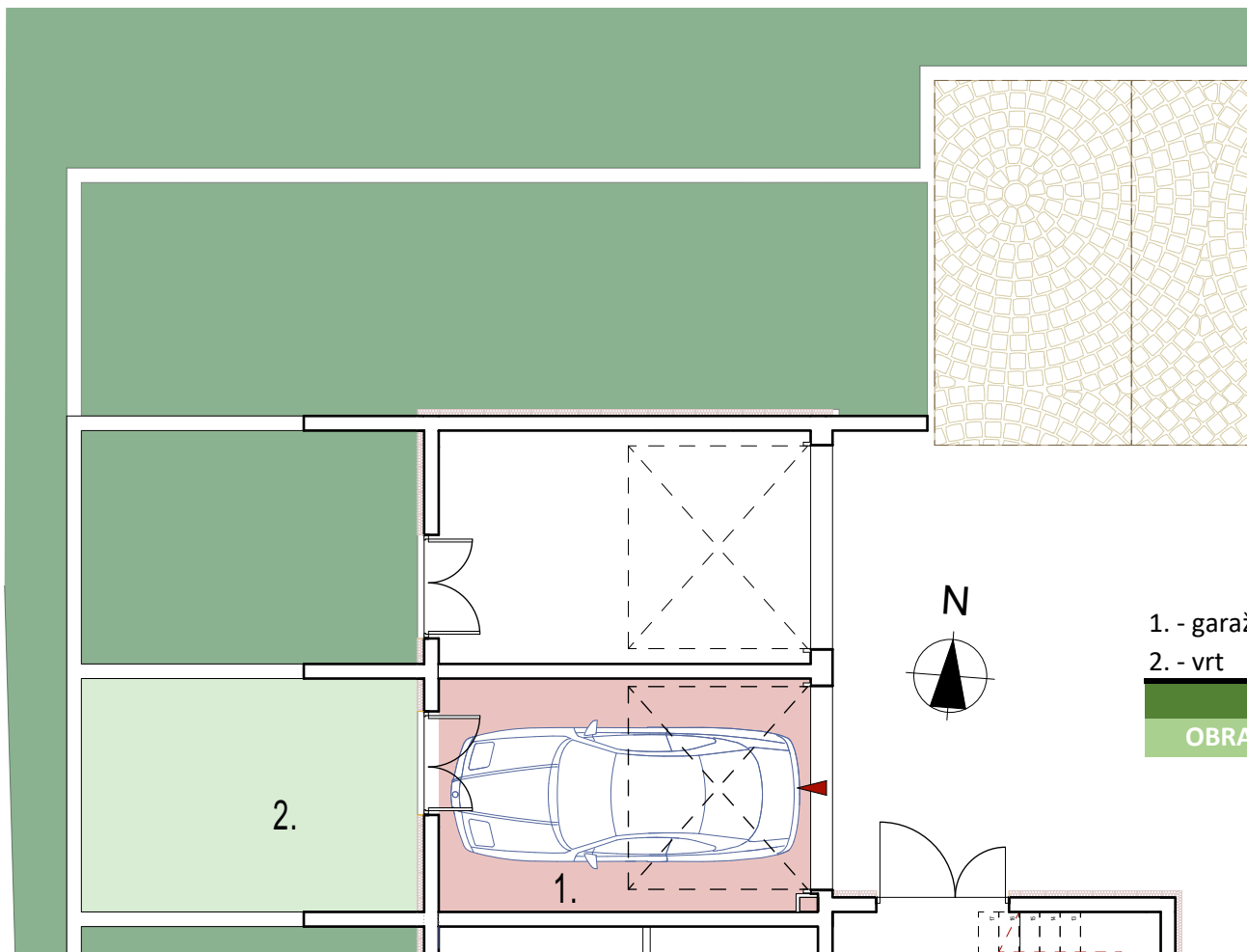
1. - garažno mjesto	16,45
2. - vrt	14,75
UKUPNA POVRŠINA:	31,20
OBRAČUNSKA POVRŠINA:	17,93



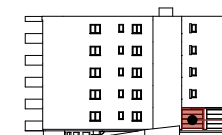
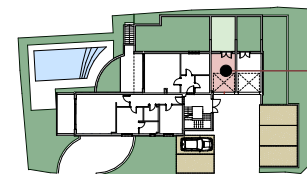
GARAŽA G1

prizemlje - sjevero zapad

KATALOG STANOVA



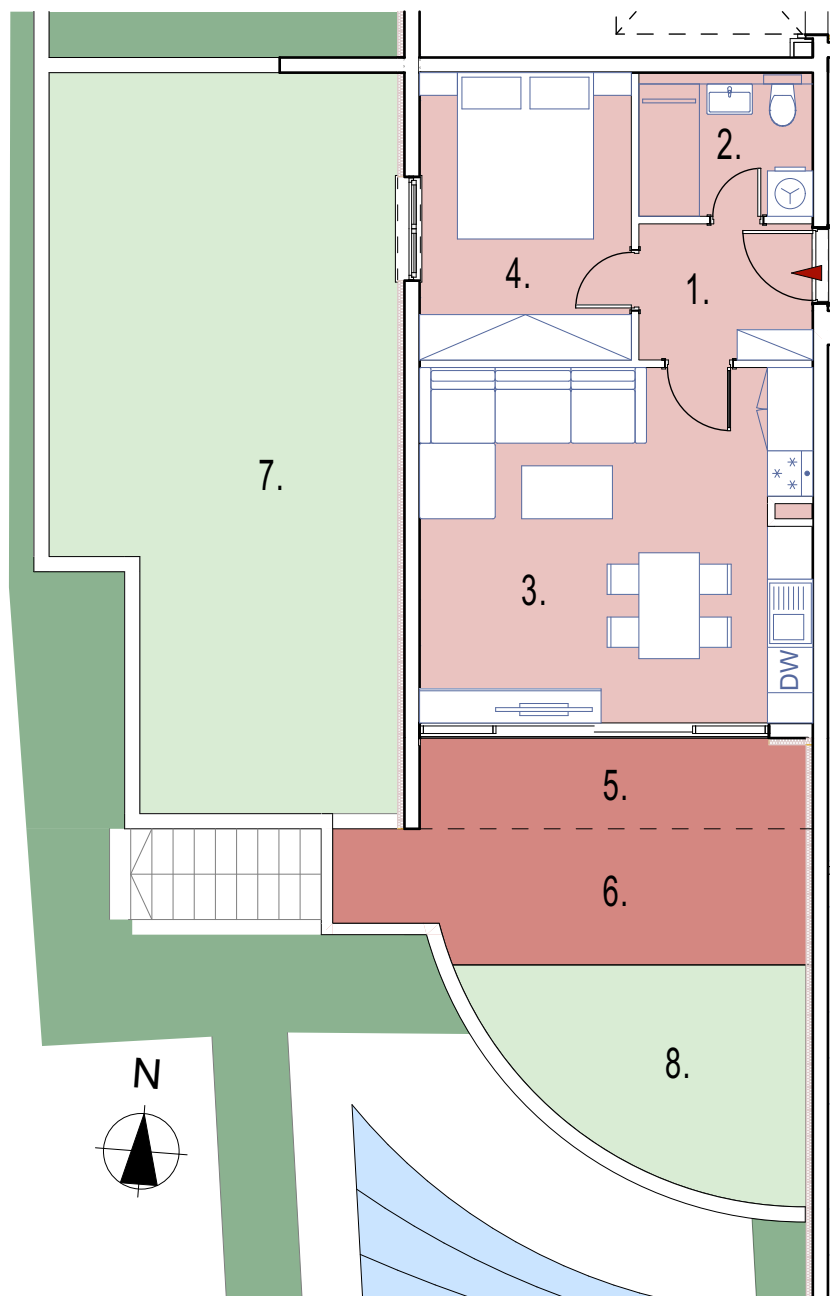
1. - garažno mjesto	16,45
2. - vrt	14,75
UKUPNA POVRŠINA:	31,20
OBRAČUNSKA POVRŠINA:	17,93



KATALOG STANOVA

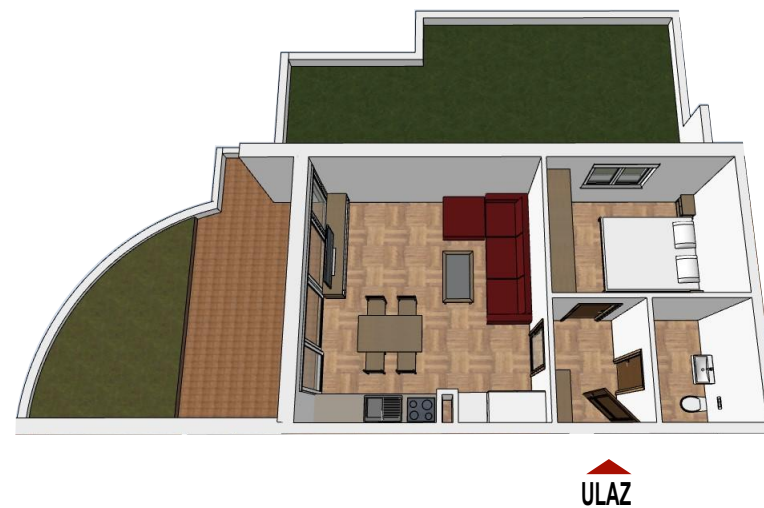
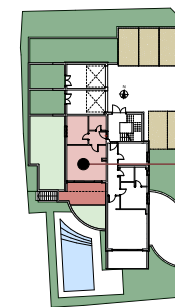
GARAŽA G2

prizemlje - sjevero zapad



- 1. - hodnik 4,14
- 2. - kupaonica 4,37
- 3. - kuhinja, blag. I dn.boravak 24,33
- 4. - soba 1 10,60
- 5. - lođa 6,35
- 6. - natkrivena terasa 10,45
- 7. - vrt zapad 41,10
- 8. - vrt jug 10,87

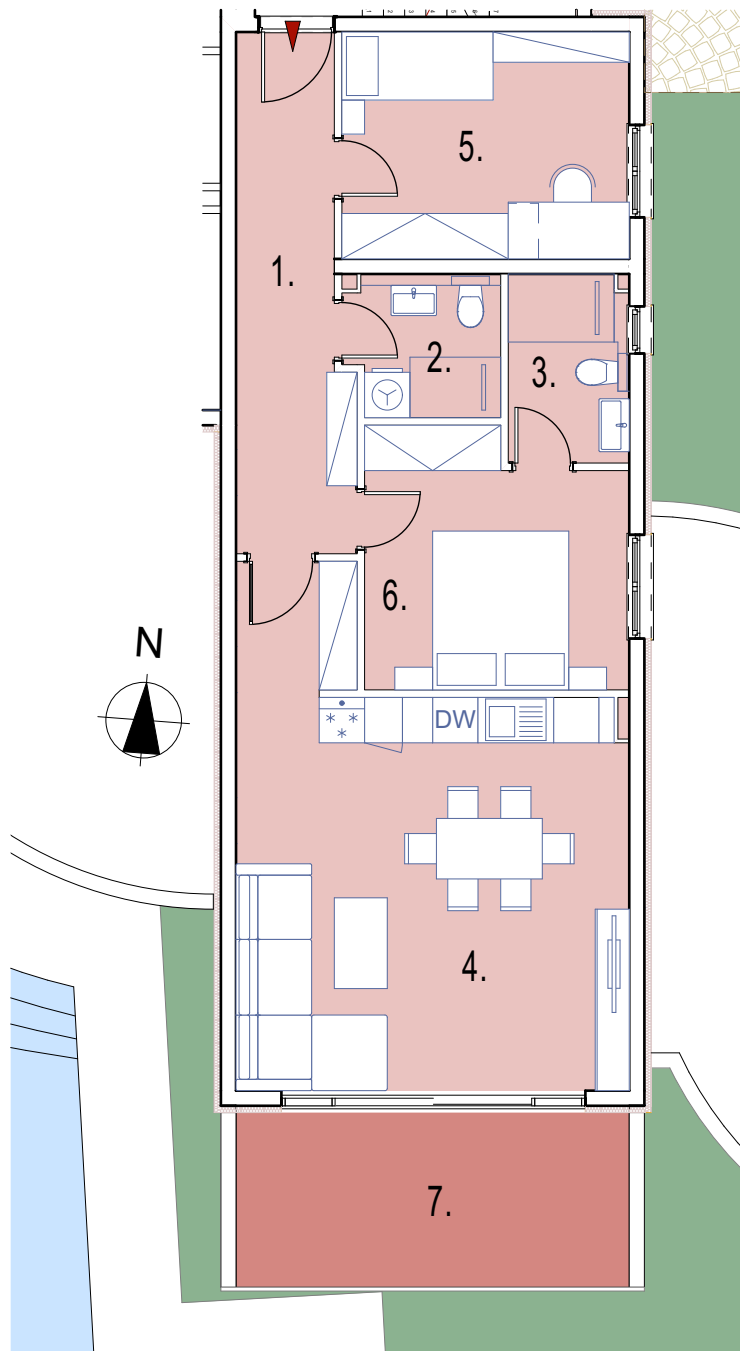
UKUPNA POVRŠINA:	112,21
OBRAČUNSKA POVRŠINA:	58,62



KATALOG STANOVA

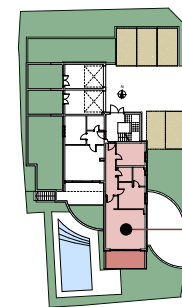
STAN S1

prizemlje - zapad



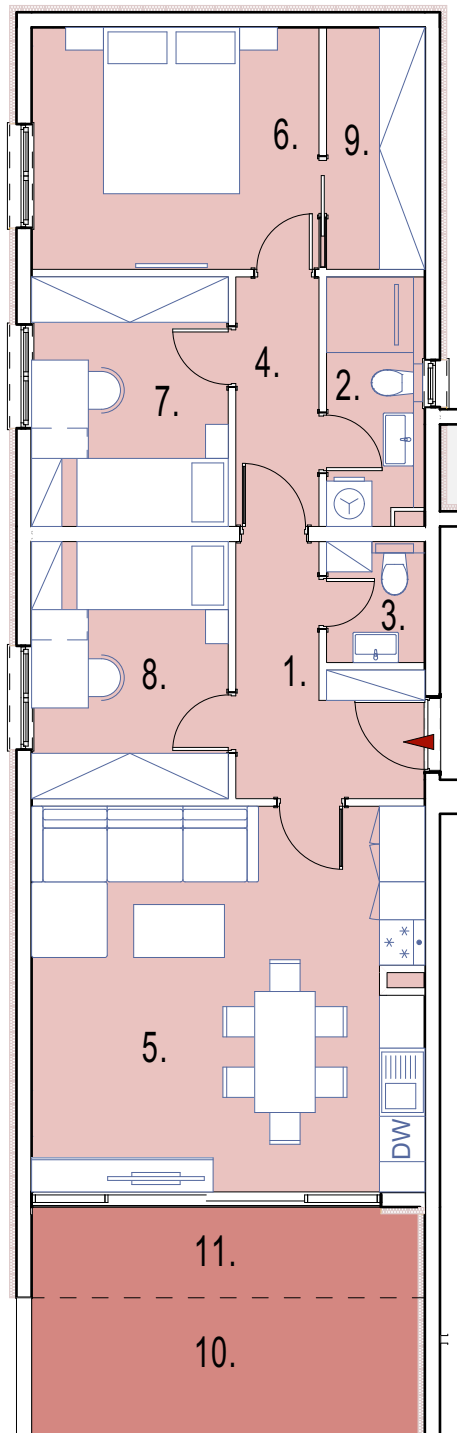
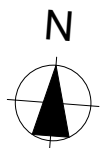
- 1. - hodnik 9,67
- 2. - kupaonica 1 3,72
- 3. - kupaonica 2 3,93
- 4. - kuhinja, blag. I dn.boravak 30,02
- 5. - soba 1 11,36
- 6. - soba 2 11,20
- 7. - balkon 12,37

UKUPNA POVRŠINA:	82,27
OBRAČUNSKA POVRŠINA:	76,09



KATALOG STANOVA

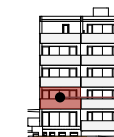
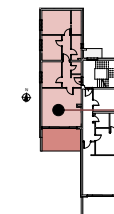
STAN S2
prizemlje - istok



1. - hodnik	6,08
2. - kupaonica 1	4,15
3. - WC	2,08
4. - predsoblje	3,63
5. - kuhinja, blag. I dn.boravak	26,41
6. - soba 1	12,09
7. - soba 2	8,55
8. - soba 3	8,81
9. - garderoba 1	4,12
10. - balkon	9,20
11. - lodja	6,37

UKUPNA POVRŠINA: 91,49

OBRAČUNSKA POVRŠINA: 85,30

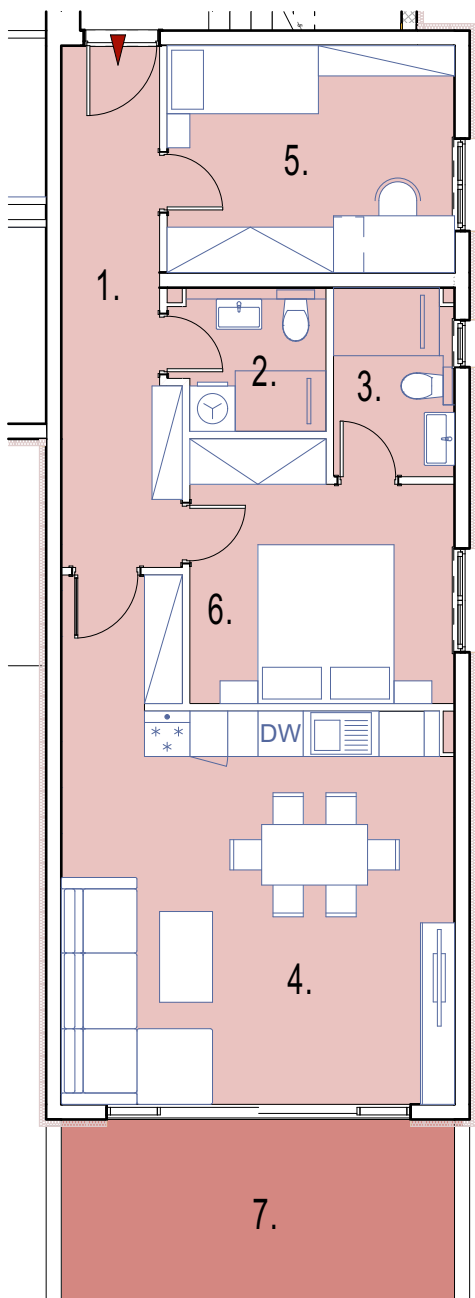
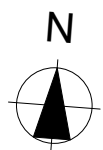


ULAZ

KATALOG STANOVA

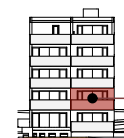
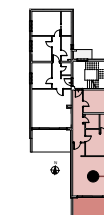
STAN S3

kat 1 - zapad



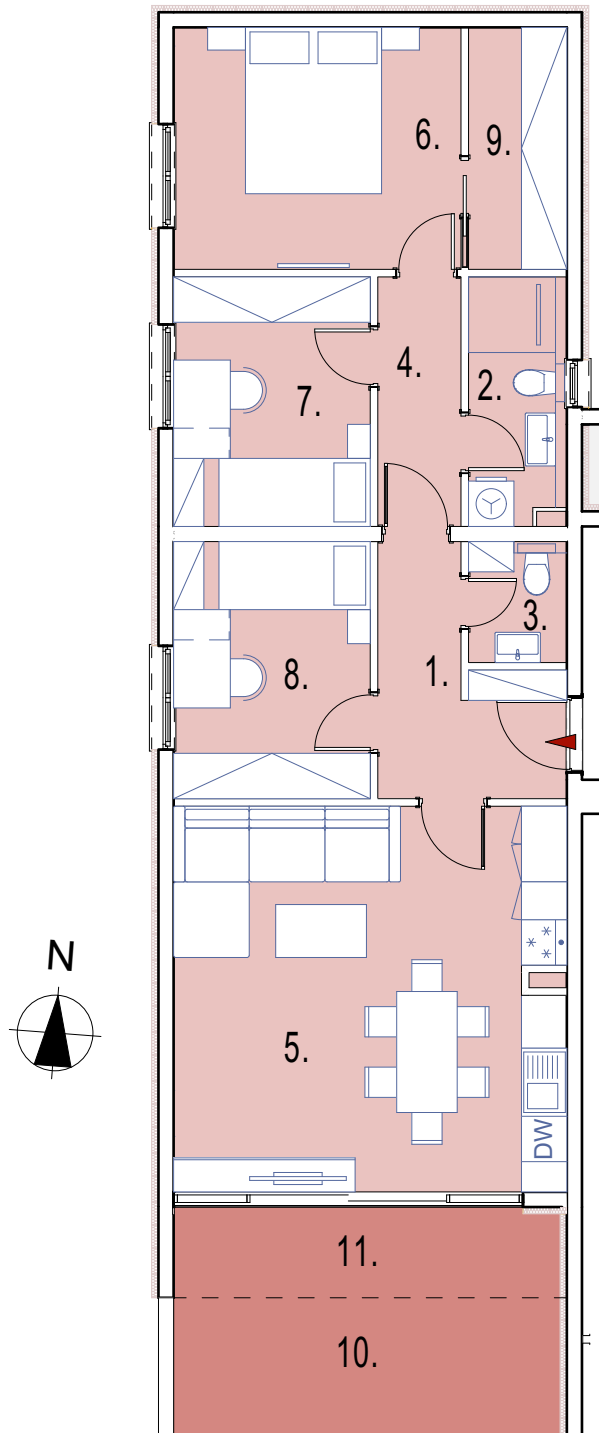
1. - hodnik	9,67
2. - kupaonica 1	3,72
3. - kupaonica 2	3,93
4. - kuhinja, blag. I dn.boravak	29,78
5. - soba 1	11,36
6. - soba 2	11,20
7. - balkon	12,62

UKUPNA POVRŠINA:	82,28
OBRAČUNSKA POVRŠINA:	75,97



STAN S4
kat 1 - istok

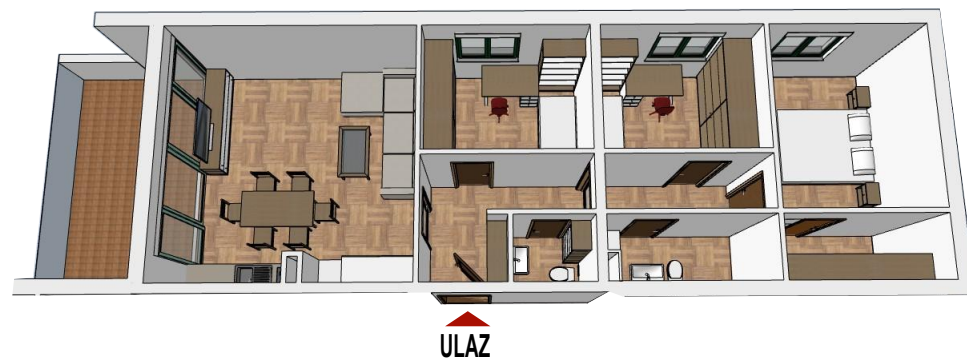
KATALOG STANOVA



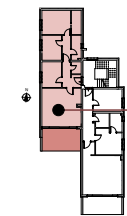
1. - hodnik	6,08
2. - kupaonica 1	4,11
3. - WC	2,08
4. - predsoblje	3,63
5. - kuhinja, blag. I dn.boravak	26,41
6. - soba 1	12,09
7. - soba 2	8,55
8. - soba 3	8,81
9. - garderoba 1	4,12
10. - balkon	9,20
11. - lodja	6,37

UKUPNA POVRŠINA: 91,45

OBRAČUNSKA POVRŠINA: 85,26

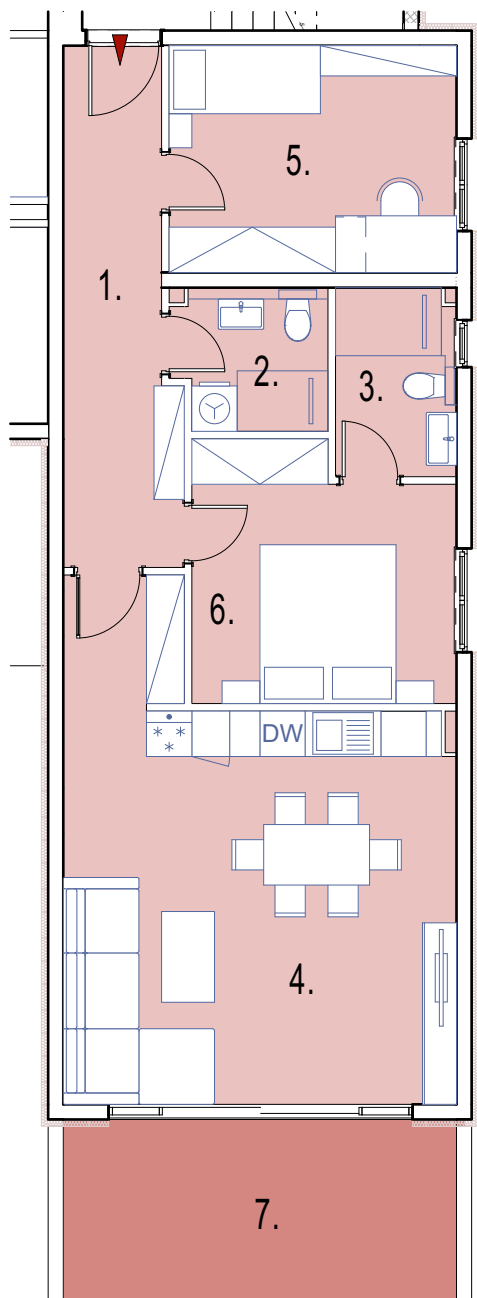
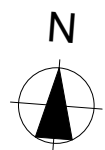


KATALOG STANOVA



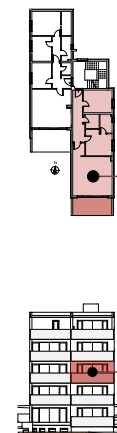
STAN S5

kat 2 - zapad



1. - hodnik	9,67
2. - kupaonica 1	3,69
3. - kupaonica 2	3,90
4. - kuhinja, blag. I dn.boravak	29,78
5. - soba 1	11,36
6. - soba 2	11,20
7. - balkon	12,62

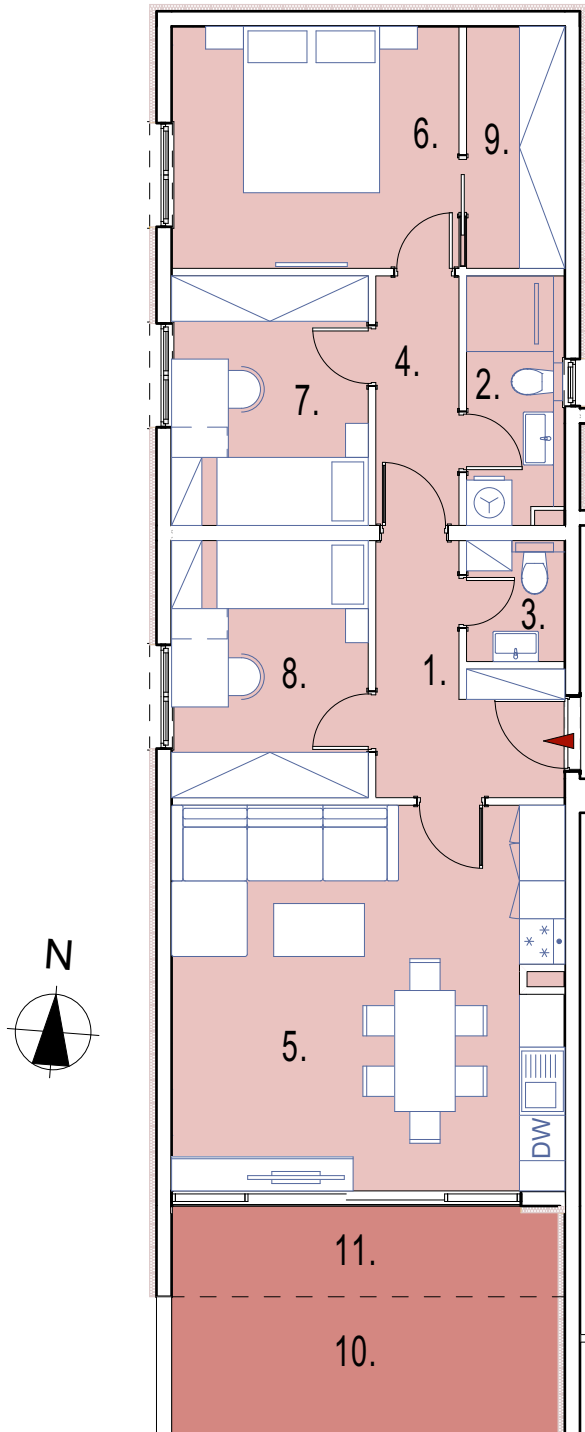
UKUPNA POVRŠINA:	82,22
OBRAČUNSKA POVRŠINA:	75,91



STAN S6

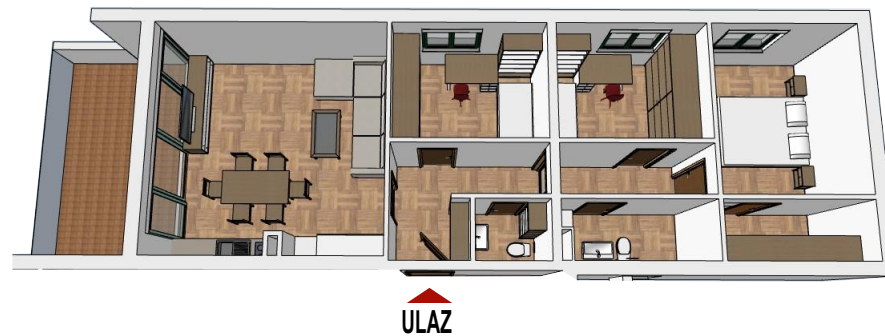
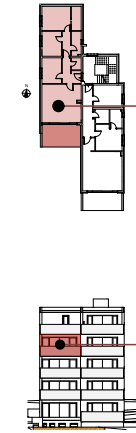
kat 2 - istok

KATALOG STANOVA



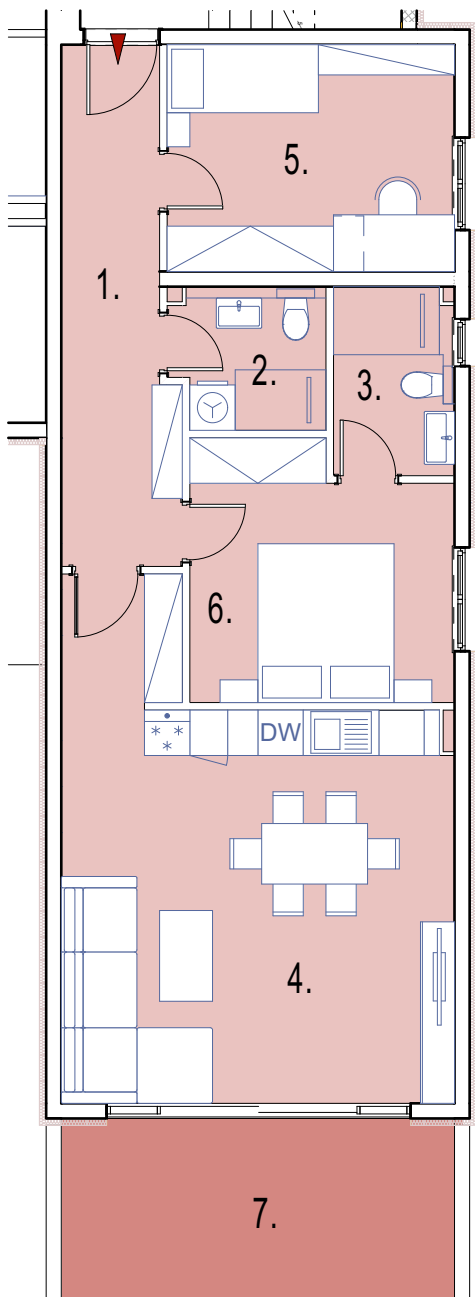
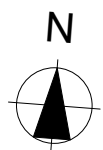
1. - hodnik	6,08
2. - kupaonica 1	4,08
3. - WC	2,08
4. - predsoblje	3,63
5. - kuhinja, blag. I dn.boravak	26,41
6. - soba 1	12,09
7. - soba 2	8,55
8. - soba 3	8,81
9. - garderoba 1	4,12
10. - balkon	9,20
11. - lodja	6,37

UKUPNA POVRŠINA:	91,42
OBRAČUNSKA POVRŠINA:	85,23



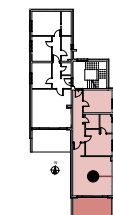
KATALOG STANOVA

STAN S7
kat 3 - zapad



1. - hodnik	9,67
2. - kupaonica 1	3,69
3. - kupaonica 2	3,90
4. - kuhinja, blag. I dn.boravak	29,78
5. - soba 1	11,36
6. - soba 2	11,20
7. - balkon	12,62

UKUPNA POVRŠINA:	82,22
OBRAČUNSKA POVRŠINA:	75,91

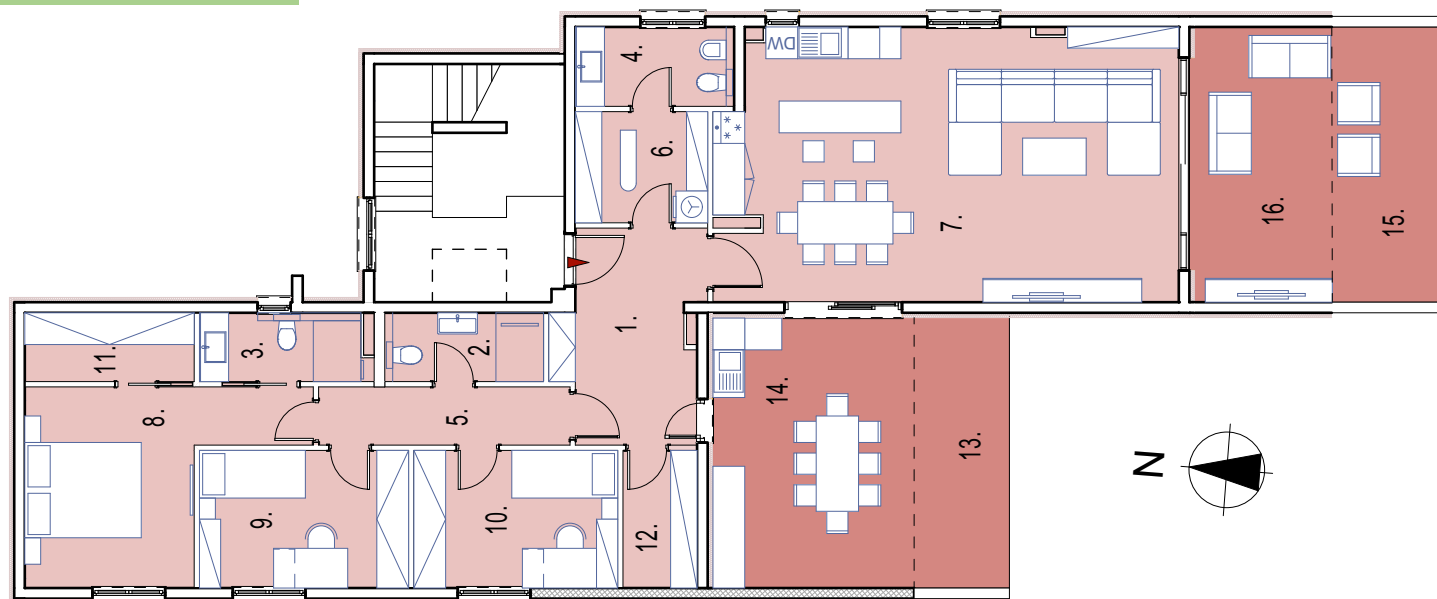
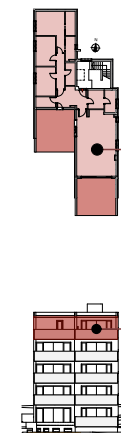


STAN S8
kat 3 - istok

KATALOG STANOVA

1. - hodnik	10,11
2. - kupaonica 1	4,05
3. - kupaonica 2	3,90
4. - WC	4,46
5. - predsoblje	5,22
6. - praonica	5,25
7. - kuhinja, blag. I dn.boravak	44,20
8. - soba 1	14,57
9. - soba 2	10,23
10. - soba 3	9,97
11. - garderoba 1	4,12
12. - garderoba 2	3,60
13. - balkon zapad	9,20
14. - lođa zapad	19,47
15. - balkon istok	12,01
16. - lodja istok	13,57

UKUPNA POVRŠINA:	173,93
OBRAČUNSKA POVRŠINA:	155,07



KATALOG STANOVA

STAN S9

kat 4